

WILLOW STAND EcoDesign

KUNST

MEASURES

DIMENSIONS H x W x D	1014x472x501 mm
GROSS WEIGHT	185 kg
FIREWOOD ENTRANCE	298x573 mm
SMOKE FLUE	Ø 150-153 mm Top

Minimum distance to combustibile materials:
Side **20 cm** - Rear wall **10 cm** - Front **100 cm**

CHARACTERISTICS

CAST IRON GRILL	
NOMINAL HEAT OUTPUT	8 KW
EFFICIENCY	78 %
CO EMISSIONS	0,10%
HEAT RESISTANT PAINT	800°C
CERAMIC GLASS HEAT RESISTANCE	750°C

EAN 8426964230512
REF. KUNST 23051

ECODESIGN



EXTERNAL AIR INTAKE



DOUBLE STEEL BODY SHEET
6 + 3 MM



VERMICULITE LINING



PRINTED GLASS



WOOD LOGS UP TO
50 CM



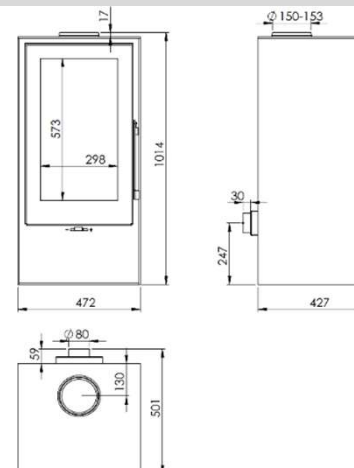
240
m³ **HEATING VOLUME**



CLEAN GLASS SYSTEM



DOUBLE COMBUSTION



B1mSchV2



WILLOW STAND EN